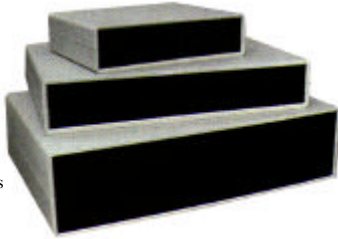


# CABINETS

## SLIMLINE INSTRUMENT CABINETS

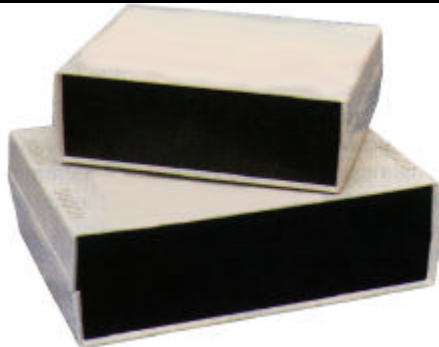
These moulded plastic cases are a two part design with a tongue and groove joint between the top and bottom sections. This, coupled with the custom front and rear panels, ensures a perfect fit for a very professional finish.



- \* Integral guide slots for mounting PCB's
- \* Moulded bosses or stand-offs for horizontal mounting of PCB's
- \* Made from high impact ABS
- \* Both top and bottom sections are lightly textured which affords a non-scratch surface and maintains a high quality finish.

Part Number	Size (W x D x Hmm)
H0472	140 x 110 x 35
H0474	225 x 165 x 40
H0476	260 x 180 x 65

## ABS INSTRUMENT CABINETS



Internal mounting posts enable a wide combination of PCB's, or transformers etc, to be accommodated. PCB guide rails internally allow vertical PCB posting in several locations. Removable front and rear panels. Attractive textured finish one side and plain on the reverse side. Integral feet, Includes generous ventilation slots.

Part Number	Size (W x D x Hmm)
H0480F	200W x 155D x 65Hmm Light Grey with Black Panels
H0481F	200W x 155D x 65Hmm Black Case with Black Panels
H0482	250W x 190D x 80Hmm Light Grey with Black Panels
H0483	250W x 190D x 80Hmm Black Grey with Black Panels

Replacement front and rear panels are available. Either ABS PVC Panels or Natural Aluminium Panel. Please call for details.

## SUPER LARGE INSTRUMENT CABINETS



Includes generous ventilation slots on both the top and bottom panels, a myriad of mounting posts for PCB mounting and "extra bugh" mounting panels are included for securing transformers. Two colours available, grey case with grey panels, or black case with grey panels.

- \* Designed to house amplifiers, inverters, power supplies, etc.
- \* Vented for efficient air-flow cooling.
- \* Extra tough, super finish front and rear panels.
- \* Dimensions: 355W x 250D x 122H mm

Part Number	Description
H0490	Grey Case
H0491	Black Case
H0493	Black Case, Grey front/rear Panel

## SNAP TOGETHER CASE

Uses no screw for assembly, the two halves simply snap securely together. Manufactured from high-impact plastic with side vents and removable front and rear panels.



Part Number	Size (W x D x Hmm)
H0470	135W x 47H x 94W mm

## IP54 DELUXE UTILITY ENCLOSURES



This professional series features solid ABS screw together construction, internal PCB guides and an attractive rounded finish. Larger sizes include stick on rubber feet and brass screw inserts, these boxes are dust and moisture proof.

Part Number	Size (W x D x Hmm)
H0212	50 x 90 x 16
H0214	50 x 90 x 24
H0215	50 x 90 x 32
H0216	60 x 120 x 30
H0218	80 x 150 x 30
H0220	100 x 190 x 40
H0222	100 x 190 x 80

## IP65 SEALED ENCLOSURES

Supplied with neoprene lid sealing gasket, with the seal installed, these enclosures meet IP65 dust and hose proof standard. Available with transparent or solid colour lid. PCB mounting points are moulded into the enclosure base.



Grey Lid & Grey Base	
Part Number	Size (L x W x Hmm)
H0300	65 x 60 x 40
H0302	85 x 80 x 55
H0304	125 x 85 x 55
H0306	165 x 85 x 55
H0308	165 x 125 x 75
H0310	186 x 146 x 75

Clear Lid & Grey Base	
Part Number	Size (L x W x Hmm)
H0320	65 x 60 x 40
H0322	85 x 80 x 55
H0324	125 x 85 x 55
H0326	165 x 85 x 55
H0328	165 x 125 x 75
H0330	186 x 146 x 75

# SEMTRONICS P/L

## JIFFY BOXES

Manufactured from sturdy ABS plastic these boxes have a moulded PCB mounting design. Allows PCB's to be installed vertically, or snapped in horizontally without the use of PCB stand-offs.



Part Number	Size (W x D x Hmm)	Top	Colour	Style
E1A	83 x 54 x 30	Aluminium	Black	UB5
E1P	83 x 54 x 30	Plastic	Black	UB5
E1G	83 x 54 x 30	Plastic	Grey	UB5
E2A	130 x 67 x 42	Aluminium	Black	UB3
E2P	130 x 67 x 42	Plastic	Black	UB3
E2G	130 x 67 x 42	Plastic	Grey	UB3
E3A	158 x 95 x 53	Aluminium	Black	UB1
E3P	158 x 95 x 53	Plastic	Black	UB1
E3G	158 x 95 x 53	Plastic	Grey	UB1
E4A	198 x 113 x 62	Aluminium	Black	UB2
E4P	198 x 113 x 62	Plastic	Black	UB2
E4G	198 x 113 x 62	Plastic	Grey	UB2

## DIE CAST BOXES

These sturdy Die-Cast Aluminium Boxes offer a high degree of RFI shielding. They are lightweight and extremely robust, all models have inbuilt slots for accepting PCB's. Incorporates internal raised lip for the lid to seal against, to make these watertight.



Part Number	Size (L x W x Hmm)
DC1	100 x 50 x 25
DC2	110 x 60 x 30
DC3	120 x 65 x 40
DC4	119 x 94 x 55
DC5	190 x 120 x 60
DC6	150 x 80 x 50
DC7	119 x 94 x 30
HB5050	222 x 146 x 55

## HORWOOD CASES

Assembled in minutes, this range of boxes is supplied in kit form. The top, bottom and sides are finished in attractive black "Marvi Plate". The front and back are natural aluminium. All models come complete with front carry handles.



Part Number	Size (W x D x Hmm)
H0461	153 x 203 x 102
H0463	254 x 203 x 102
H0465	203 x 228 x 76
H0468	305 x 228 x 76